



Sn = 2 mm

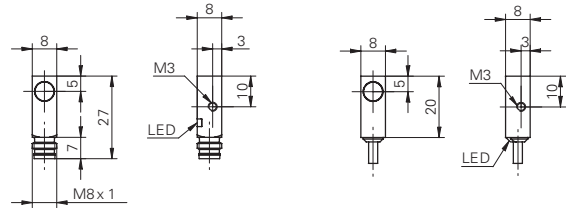
WIRE

- Shortest rectangular design
- Cable and connector versions
- High switching frequency

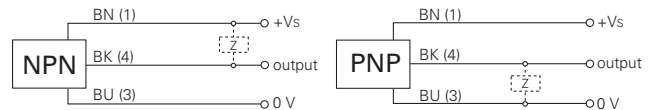


general data	
mounting type	shielded
nominal sensing distance Sn	2 mm
hysteresis	3 ... 20 % of Sr
output indicator	LED red
electrical data	
switching frequency	< 5 kHz
voltage supply range +Vs	10 ... 30 VDC
current consumption max.	12 mA
voltage drop Vd	< 2 VDC
output current	< 200 mA
short circuit protection	yes
reverse polarity protection	yes
mechanical data	
type	rectangular
material (sensing face)	PBT
housing material	brass nickel plated
dimension	8 mm
cable	
housing length	20 mm
connector M8	
housing length	27 mm
ambient conditions	
operating temperature	-25 ... +75 °C
protection class	IP 67
accessories	
connectors	ESG 32S, ESW 31S

dimension drawings



connection diagrams



order reference	connection types	output circuit
IFFM 08N1703/O1L	cable	NPN make function (NO)
IFFM 08N17A5/O1S35L	connector M8	NPN make function (NO)
IFFM 08N3703/O1L	cable	NPN break function (NC)
IFFM 08N37A5/O1S35L	connector M8	NPN break function (NC)
IFFM 08P1703/O1L	cable	PNP make function (NO)
IFFM 08P17A5/O1S35L	connector M8	PNP make function (NO)
IFFM 08P3703/O1L	cable	PNP break function (NC)
IFFM 08P37A5/O1S35L	connector M8	PNP break function (NC)



**Sn = 2 mm**

**W I R E**

- High switching frequency
- Cable and connector versions



**general data**

mounting type	shielded
nominal sensing distance Sn	2 mm
hysteresis	3 ... 20 % of Sr
output indicator	LED red

**electrical data**

switching frequency	< 5 kHz
voltage supply range +Vs	10 ... 30 VDC
current consumption max.	12 mA
voltage drop Vd	< 2 VDC
output current	< 200 mA
short circuit protection	yes
reverse polarity protection	yes

**mechanical data**

type	rectangular
material (sensing face)	PBT
housing material	brass nickel plated
dimension	8 mm

**cable**

housing length	28,5 mm
----------------	---------

**connector M8**

housing length	35,5 mm
----------------	---------

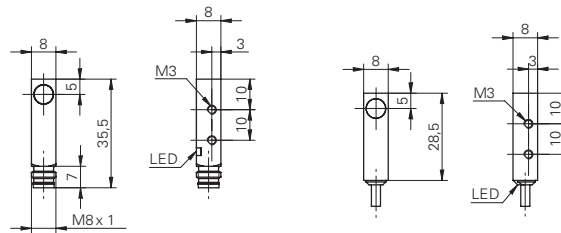
**ambient conditions**

operating temperature	-25 ... +75 °C
protection class	IP 67

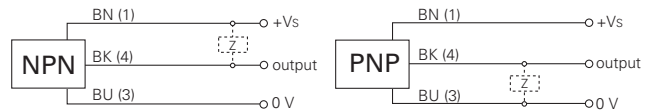
**accessories**

connectors	ESG 32S, ESW 31S
------------	------------------

**dimension drawings**



**connection diagrams**



order reference	connection types	output circuit
IFFM 08N1702/O1L	cable	NPN make function (NO)
IFFM 08N17A3/O1S35L	connector M8	NPN make function (NO)
IFFM 08N3702/O1L	cable	NPN break function (NC)
IFFM 08N37A3/O1S35L	connector M8	NPN break function (NC)
IFFM 08P1702/O1L	cable	PNP make function (NO)
IFFM 08P17A3/O1S35L	connector M8	PNP make function (NO)
IFFM 08P3702/O1L	cable	PNP break function (NC)
IFFM 08P37A3/O1S35L	connector M8	PNP break function (NC)

IFFM 08 Sn = 2 mm

Inductive sensors 3-wire digital output



Sn = 2 mm

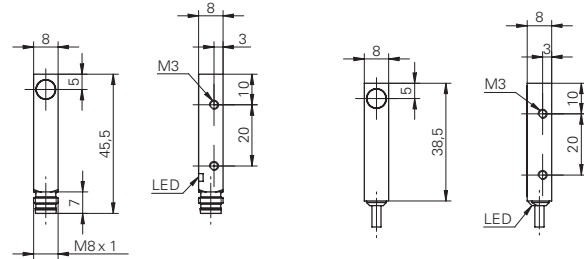
WIRE

- High switching frequency
- Cable and connector versions

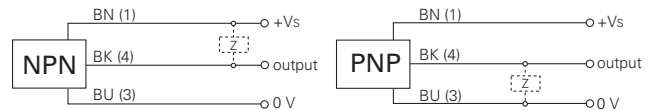


general data	
mounting type	shielded
nominal sensing distance Sn	2 mm
hysteresis	3 ... 20 % of Sr
output indicator	LED red
electrical data	
switching frequency	< 5 kHz
voltage supply range +Vs	10 ... 30 VDC
current consumption max.	12 mA
voltage drop Vd	< 2 VDC
output current	< 200 mA
short circuit protection	yes
reverse polarity protection	yes
mechanical data	
type	rectangular
material (sensing face)	PBT
housing material	brass nickel plated
dimension	8 mm
cable	
housing length	38,5 mm
connector M8	
housing length	45,5 mm
ambient conditions	
operating temperature	-25 ... +75 °C
protection class	IP 67
accessories	
connectors	ESG 32S, ESW 31S

dimension drawings



connection diagrams



order reference	connection types	output circuit
IFFM 08N1701/O1L	cable	NPN make function (NO)
IFFM 08N17A1/O1S35L	connector M8	NPN make function (NO)
IFFM 08N3701/O1L	cable	NPN break function (NC)
IFFM 08N37A1/O1S35L	connector M8	NPN break function (NC)
IFFM 08P1701/O1L	cable	PNP make function (NO)
IFFM 08P17A1/O1S35L	connector M8	PNP make function (NO)
IFFM 08P3701/O1L	cable	PNP break function (NC)
IFFM 08P37A1/O1S35L	connector M8	PNP break function (NC)

IFFM 08 Sn = 2 mm

Inductive sensors 3-wire digital output



Sn = 2 mm

W I R E

- Extra flat version
- Through bore for M3 screw
- Robust metal housing



general data

mounting type	shielded
nominal sensing distance Sn	2 mm
hysteresis	2 ... 20 % of Sr
output indicator	LED red

electrical data

switching frequency	< 5 kHz
voltage supply range +Vs	10 ... 30 VDC
current consumption max.	12 mA
voltage drop Vd	< 2 VDC
output current	< 100 mA
short circuit protection	yes
reverse polarity protection	yes

mechanical data

type	rectangular
material (sensing face)	PBT
housing material	die-cast zinc nickel plated
dimension	8 mm
housing length	16 mm

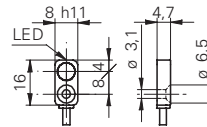
ambient conditions

operating temperature	-25 ... +75 °C
protection class	IP 67

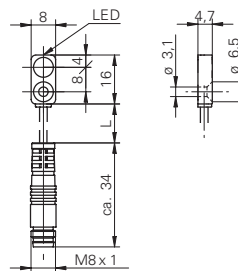
accessories

connectors	ESG 32S, ESW 31S
------------	------------------

dimension drawing

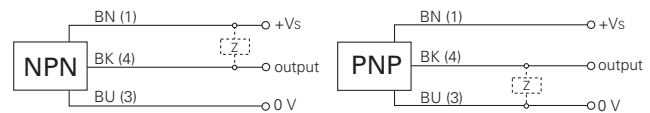


flylead connector version



standard cable length 200 mm

connection diagrams



order reference	connection types	output circuit
IFFM 08N17A6/KS35L	flylead connector M8	NPN make function (NO)
IFFM 08N17A6/L	cable	NPN make function (NO)
IFFM 08N37A6/KS35L	flylead connector M8	NPN break function (NC)
IFFM 08N37A6/L	cable	NPN break function (NC)
IFFM 08P17A6/KS35L	flylead connector M8	PNP make function (NO)
IFFM 08P17A6/L	cable	PNP make function (NO)
IFFM 08P37A6/KS35L	flylead connector M8	PNP break function (NC)
IFFM 08P37A6/L	cable	PNP break function (NC)